



Derbyshire FA Membership Guide

Season 2022/23

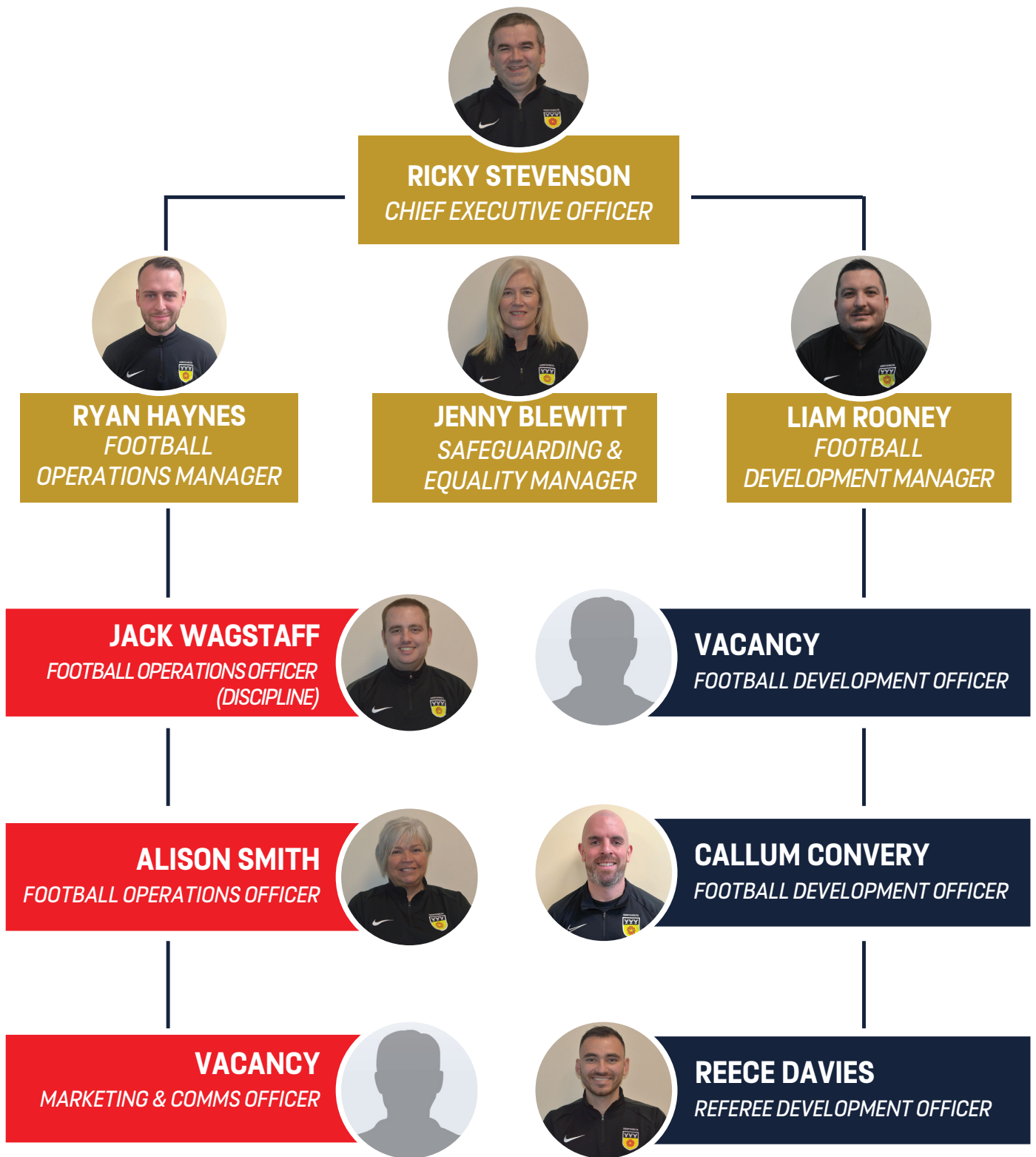


CONTENTS



Staffing Structure 2022/23.....	4
Introduction from Chairman.....	5
Club Affiliation 2022/23.....	6
Insurance - bluefin sport.....	8
What is the National Game Insurance Scheme (NGIS)?.....	9
How can I find out more about the NGIS?.....	9
Fees for the 2022/23 season.....	12
New Clubs/County Cups.....	14
Affiliation Requirements.....	16
New Safeguarding Children Course.....	16
SCC: Managing Current Learners (Recertification).....	17
New First Aid Course 19.....	17
Issues logging in.....	17
Required roles and qualifications.....	19
Policies and templates.....	20
Validation Visits.....	23
Best Practice.....	24
Matchday madness.....	25
Education.....	26
Facilities.....	27
Football Foundation.....	29
Local Football Facilities Plans.....	31
Grass Pitch Improvement Programme.....	32
Online Support.....	36
Useful Links.....	37

STAFFING STRUCTURE 2022/23



 SENIOR MANAGEMENT TEAM  FOOTBALL OPERATIONS TEAM  FOOTBALL DEVELOPMENT TEAM

INTRODUCTION FROM CHAIRMAN



Welcome to the Derbyshire County FA Membership booklet. This E-Booklet is designed to give you information on the affiliation process, safeguarding requirements for the season and the benefits of being one of our member Clubs.

The 2021/22 season has been the first season since the start of the Covid-19 pandemic that has been uninterrupted. The season saw us launch our new three year strategy through which we aim to change lives through football.

The 2021/22 season has been extremely successful for Derbyshire clubs, a number of whom have been promoted or had their best season in history. We'd like to share our congratulations to all those clubs.

We are delighted to inform you that the County Cups will return in the 2022/23 season and we look forward to helping create new memories that will last a lifetime. Whilst there is a return of affiliation fees for the first time in two seasons, as this was previously covered in a grant from The FA and Sport England, we have worked hard to ensure the fees provide value for money and they remain the lowest in our Region.

We would like to thank you for all of your hard work and look forward to continuing to work with you in the new season.

Best Wishes,
Frank McArdle



CLUB AFFILIATION 2022/23

Affiliation is the process by which clubs "register" with their County Football Association, allowing them to play affiliated football for the season. Every club must affiliate each season, this involves supplying details of the teams, as well as the key officers and team officials involved in the running of your club to the County FA.

AFFILIATION PROCESS

To commence the affiliation process the Club Secretary will need to log into the [Whole Game System](#) with their email address and password.

If, when you try to log into the system, you receive an error message *"This email exists on more than one account. Please contact myaccount@thefa.com to resolve the issue"*.

You will need to follow this link in order to resolve the issue:

[WGS Login - my email exists on more than one account](#)

IN PROGRESS

Once you have logged into the system you will be able to commence the affiliation process. Once you have completed the following, you will be able to submit your application:

1. Club Details *
2. Club Officials
3. Club Grounds **
4. Teams *** and County Cup entries
5. Supporting Documents (Personal Accident & Public Liability)
6. Membership Fees and NGIS can be purchased
7. Summary Page
8. Submit for Approval

* Any Club wanting to change their name will need to email info@derbyshirefa.com with full details of the current name and the proposed change. The County FA will review the request and inform the Club in due course of the decision.

**If due to the current situation regarding Covid-19 you are unable to confirm your venue for home matches and training, please enter the venues you used last season and update us if and when this changes.

*** The FA have completed the team migration of data, this will copy drafts of last season's teams, club/team officials etc which clubs will need to review. Any amendments need to be forwarded to info@derbyshirefa.com

REVIEW

The County FA will then review your Affiliation. This process can take up to a week dependant on the size of your club. Following the review, we will either submit the affiliation to the invoicing stage or feedback to you any required amendments.

These may include but are not limited to, adding a coach to a team, informing us of which league the team will be playing in, providing your insurance certificate.

The feedback will be via email to the club secretary; therefore, it is important that the club secretary monitors their emails on a regular basis.

SUBMITTED AND INVOICED

At this stage you will be invoiced for public liability and personal accident insurance which will need to be paid before your application moves onto the next stage.

(Please note new clubs will be invoiced for affiliation fees via a separate invoice)

APPROVED

Once payment has been submitted, the County FA will conduct a final review before confirming your completed affiliation.

COMPLETED

Following the final review, the County FA will approve your Affiliation and send a confirmation email to the club secretary with the club Affiliation number. Until receipt of the confirmation email you are NOT Affiliated.

DEADLINE

The deadline for affiliation is 29th July 2022, any club affiliating after this time will be subject to a £20 late fee.



INSURANCE - BLUEFIN SPORT

Information on Derbyshire FA basic requirements for Clubs

Club Insurance 'product'	Amount (£) 2022/23	Notes
Youth Superior Gold U12's and below	£20.50	Personal Accident Insurance cost per team provided by Bluefin Sports
Youth Superior Gold U13's and above	£26.50	Personal Accident Insurance cost per team provided by Bluefin Sports
Adult PA Superior 200	£86	Personal Accident Insurance cost per team provided by Bluefin Sports.
Adult Superior 200 – W/V	£61	
Walking Football	£52	Personal Accident Insurance cost per team provided by Bluefin Sports.
County cover Plus Public Liability Insurance for Clubs	£60	Public Liability cost per Club provided by Bluefin Sports

WHAT'S COVERED?

Adult & Youth PA Benefits include :

- Accidental Death
- Permanent Disablement
- Concussion
- Broken Bones / Primary Dislocation
- Snapped / Ruptured Achilles Tendon or Cruciate Ligament
- Temporary Total Disablement (Adult PA only)

County cover Public Liability insurance includes the following covers :

- Public & Products Liability - £10,000,000
- Player-to-Player Legal Defence Costs - £250,000
- Employers' Liability - £10,000,000
- Officer & Committee Liability - £10,000,000
- Professional Indemnity - £10,000,000
- Cyber Liability - £500,000

County cover Plus Public Liability insurance includes the following covers :

- Public & Products Liability - £10,000,000
- Player-to-Player Awards & Legal Defence Costs – £10,000,000
- Employers' Liability - £10,000,000
- Officer & Committee Liability - £10,000,000
- Professional Indemnity - £10,000,000
- Cyber Liability - £500,000

Upgrading your PA insurance

- Visit www.bluefinsport.co.uk/NGIS
- Secure Quote & Buy website
- Option to increase the Temporary Total Disablement benefit up to £600 per month
- Purchase additional covers, including Physiotherapy & Dental Treatment
- Policy Documents auto-generated and e-mailed to you



WHAT IS THE NATIONAL GAME INSURANCE SCHEME (NGIS)?

In 2011, The FA set out to raise the standards of insurances that could be made available to its affiliated members, to enable access to a uniformity of cover across the grassroots game that hadn't been seen before.

The overarching objective for the NGIS has been to ensure that insurance products, specifically tailored to the needs of grassroots football, could be made available to all.

In 2012, Bluefin Sport was appointed by The FA to deliver the NGIS.

The NGIS provides two core covers – Public Liability and Personal Accident.

It is compulsory for all affiliated clubs to have public liability insurance and all affiliated teams to have personal accident insurance.

When affiliating to Derbyshire FA via the Whole Game System, Clubs may choose to opt-in to the NGIS public liability insurance.

You can also opt-in to the NGIS personal accident insurance via your County FA affiliation, to meet the minimum cover required.

If you require a higher level of personal accident cover, this can be purchased from Bluefin Sport online, or by completing an application form and returning it to them in the post, with a cheque in remittance of the premium payable.

Details of the minimum cover required by Derbyshire FA can be found on the Bluefin Sport website, please [click here](#).

Clubs have the option to purchase the compulsory insurances either via the NGIS or elsewhere. Other products are available and independent advice can be sourced from a licensed insurance broker.

HOW CAN I FIND OUT MORE ABOUT THE NGIS?

To learn more about the NGIS, please refer to the Bluefin Sport website [click here](#).

[Click here](#) to view a video produced by Bluefin Sport about the NGIS.

Derbyshire FA is an introducer to Marsh Ltd.

Bluefin Sport is a trading name of Marsh Ltd. Marsh Ltd is authorised and regulated by the Financial Conduct Authority for General Insurance Distribution and Credit Broking (Firm Reference No. 307511). Registered in England and Wales Number: 1507274. Registered Office: 1 Tower Place West, Tower Place, London EC3R 5BU.

MENTAL HEALTH AND SUICIDE PREVENTION PROJECT

LET'S TACKLE IT TOGETHER



DID YOU KNOW...

- Every year 38% of footballers report symptoms of depression and anxiety?
- Professional footballers will face up to 1 or more career threatening injuries meaning they are 4 times more likely to develop a mental health condition?
- 438 ex/professional footballers asked the PFA for mental health support in 2018?

OUR AIM:

Erewash Voluntary Action are delivering the Mental Health and Suicide Prevention Project across Derbyshire and Derby City. We aim to:

- Increase awareness of mental health issues
- Reduce male suicide rates
- Embed a positive culture for mental health and well-being in football clubs

OUR OFFER:

- Fully funded Mental Health and Suicide Prevention training
- Expert support to develop a Mental Health Policy and Action Plan
- Exclusive access to a Mental Health and Suicide Prevention Toolkit
- The opportunity to join a Mental Health First Aid Network

IF YOUR FOOTBALL CLUB WOULD LIKE TO TAKE ADVANTAGE OF THIS OPPORTUNITY THEN CONTACT ELLIE SCOTT TODAY AT:

 ellie@erewashcvs.org.uk

 07394 999655



Mental Health & Suicide Prevention



Joined Up Care
Derbyshire

Derbyshire and Derby City

DELIVER A GREAT DISPLAY OFF THE PITCH WITH OUR MATCHDAY MEDIA PACKAGE & CLUB HANDBOOK

The Matchday Media Package provides your club with professionally designed graphics for use on your Social Media channels.



THE PACKAGE includes pre-match, during and post match library of bespoke graphics to enhance the online user experience when following your team

Designed to meet your club branding and includes animated content and sound

**RANGE OF PAYMENT PACKAGES
TO SUIT ALL BUDGETS**



HANDBOOK SYSTEM

CREATE AN INTERACTIVE
DIGITAL HANDBOOK
IN MINUTES.

EMAIL TO YOUR CONTACTS AND
EMBED ON YOUR WEBSITE.

UPDATE AS AND WHEN
REQUIRED THROUGHOUT
THE SEASON.

HYPERLINK SPONSOR ADVERTS
STRAIGHT TO THEIR WEBSITE.



CLUB HANDBOOK

Create a club handbook that provides all the information that your players, coaches, volunteers, parents and carers will need for the season and much more

Our online handbook system allows you to create a virtual club handbook simply and easily, that can then be emailed to all club stakeholders to view on any device

CLICK HERE

MORE INFORMATION AT:

WWW

ESPORTSMEDIA.NET

FEES FOR THE 2022/23 SEASON

The fees for the 2022/23 season are below:

Club Affiliation 'product'	Amount (£) 2022/23	Notes
Grassroots Club Affiliation Fee	£0	The Club affiliation fee for a Grassroots Club playing 9v9 or 11v11
Mini-Soccer Club Affiliation Fee	£0	The Club affiliation fee for a Grassroots Club playing Mini-Soccer only
Disability Club Affiliation Fee	£0	The Club affiliation fee for Disability Club
Small Sided Club Affiliation Fee	£0	The Club affiliation fee for a Small Sided Club.
EFL Championship Club Affiliation Fee	£0	The club affiliation fee for Clubs with a team in the EFL Championship
Step 1-4 Club Affiliation Fee	£0	The club affiliation fee for Clubs with a team at Step 1-4 in the National League System
Step 5-7 Club Affiliation Fee	£0	The club affiliation fee for Clubs with a team at Step 5-7 in the National League System
Additional Youth Team Fee	£5	For each additional team affiliated to the Club (Development – u18)
Additional Grassroots Adult Team Fee	£30	For each additional Adult team affiliated to the Club (Inc. u19/u21/u23)
Additional Small Sided Team Fee	£10	For each additional Small Sided team affiliated to the Club (Inc. Recreation/)
Additional Disability Team Fee	£10	For each additional Disability team affiliated to the Club (Inc. Recreation/)
Additional EFL Championship Team Fee	£200	For each EFL Championship team affiliated to the Club
Additional Step 1-4 Team Fee	£50	For each Step 1-4 team affiliated to the Club
Additional Step 5-7 Team Fee	£35	For each Step 5-7 team affiliated to the Club
Beneficiaries	£5	Payment into the Beneficiaries Fund per Club



County Cup Competition 'product'	Amount (£) 2022/23	Notes
Senior Challenge Cup	£35	
Divisional Cup North	£20	
Divisional Cup South	£20	
Junior Cup North	£20	
Junior Cup South	£20	
Sunday Senior Cup	£20	
Sunday Junior Cup	£20	
Women's County Cup	£20	



NEW CLUBS

A new Club playing their home matches in Derbyshire will need to complete the new Club form via this link:

<https://app.smartsheet.com/sheets/jXPW8RC7jvQp2wcw9WHHXPRMPwFF7Hx6FJQxC261>

On receipt of the completed form, the County FA will create the Club and inform you when you can commence the affiliation process.

COUNTY CUPS

Following the return of County Cups in the 2022/23 season, any open age team wanting to participate need to complete the following link to enter:

<https://app.smartsheet.com/sheets/rx7g57Fg2F6xcHJ9HvC28hG5rjHMH7rQmJFV77r1>



PARTNER - KOOLPAK



First Aid Supplies for Grassroots Football at Discount Prices

Special discounted prices for the 2022/23 season

“IS YOUR FIRST AID KIT MATCH FIT?”

Koolpak has teamed up with your County FA to offer you special discounted prices for our best-selling First Aid essentials, so that you are prepared for when you need to treat an injured player

*Prices include VAT.



Koolpak Original Ice Pack
78p per pack



Kool Spray
£2.64



Team Sports First Aid Kit
£26.05



Visit the Koolpak Web Portal via the link on the County FA website, to see the full range of products available at great discounted prices

AFFILIATION REQUIREMENTS

- All committee members to have in date safeguarding for committee members
- All coaches, managers and assistants must have:
- Either in date Safeguarding Children Workshop or Safeguarding Children Course or Safeguarding For All*
- Either in date First Aid Course or Cardiac Arrest and Concussion
- Valid FA DBS for all youth teams and open age teams with any 16 or 17 year old players
- Contact numbers and individual email address for all named club and team officials

*Any individual that has completed a safeguarding children workshop and therefore is eligible to recertify must do so. Whilst Safeguarding For All will be accepted for 2021/22 affiliation, all coaches, managers and assistants must complete the Safeguarding Children Course prior to affiliation in the 2022/23 season.

NEW SAFEGUARDING CHILDREN COURSE

On Thursday 22nd April 2021, The FA launched the New Safeguarding Children's Course which has replaced the Safeguarding Children's Workshop.

The course is now available in the Boot Room for learners to access via the link below. The cost of the course is £30 and in line with FA Educations previous approach includes recertification. The new course takes between 90 to 120 minutes to complete and is valid for 2 years; after two years, a learner will need to undertake the recertification, at no charge. Recertification requires repeating the course rather than taking a shorter course.

The Boot Room – Safeguarding Children Course:

<https://thebootroom.thefa.com/learning/qualifications/fa-safeguarding-children-workshop>

The screenshot shows the FA Boot Room website interface. At the top, there is a navigation bar with links for 'TheFA.com', 'Tickets', 'Official Shop', 'Wembley', 'St. George's Park', and 'More FA Sites'. Below this is a search bar and a 'Sign in' button. The main content area features a large image of a coach in a green jacket interacting with two young girls on a football field. Below the image, there is a section titled 'The FA Safeguarding Children Course' and a 'Course Overview' box with the following details: Minimum Age: 16, Course Duration: 2 hours, Price: £30.

SCC: MANAGING CURRENT LEARNERS (RECERTIFICATION)



There are a significant number of volunteers whose certification has expired or is due to expire before the end of the season. **This course will only remain available until 30th June 2021.** After this point, they will no longer be able to access the one-hour recertification and instead will need to take the new course (as above). Please find the link below for recertification:-

If you have any volunteers who need to recertify, please encourage them to do so before the 30th June 2021, if they fail to do so they will have to do the Safeguarding Children's Course.

The FA Online Safeguarding Children Recertification:

<https://falearning.thefa.com/course/view.php?id=261>

NEW FIRST AID COURSE

The new First Aid in Football course is due to be launched in the month of May and a further update will be cascaded as further details are known.

All existing learners have extensions on their IFAIF records through until 31st July 2021 and the requirement for affiliation will be the Sudden Cardiac Arrest and Concussion modules of the playmaker course.

Cardiac Arrest - <https://falearning.thefa.com/course/view.php?id=42>

Concussion - <https://falearning.thefa.com/course/view.php?id=1720>

ISSUES LOGGING IN

We realise there will may be questions so in the first instance could I direct you to FAQs which can be found here:

<https://help.thefa.com/support/solutions/folders/7000044493>

or alternatively email info@derbyshirefa.com

PARTNER - FANATICS



**FANATICS SUPPLIES
ARE PROUD TO ANNOUNCE
OUR PARTNERSHIP WITH
DERBYSHIRE FA**



**WE ARE OFFERING AN EXTRA 10% DISCOUNT OFF
YOUR FIRST ORDER**

**USE DFA10 AT THE CHECKOUT
WWW.FANATICSSUPPLIES.CO.UK**



REQUIRED ROLES AND QUALIFICATIONS

Running a football club is a large project which requires time and effort. This means there are several roles which are mandated by The FA for the club to run successfully. The below table provides clarification for clubs, of the roles and the required qualifications for each role:

Role	DBS Check	Safeguarding Children Workshop/ Safeguarding Children Course	Emergency First Aid	Welfare Officer Course	Level 1 min.	Code of Conduct	Online Safeguarding Committee Members
Chairman	No	No	No	No	No	Yes	Yes
Secretary	No	No	No	No	No	Yes	Yes
Treasurer	No	No	No	No	No	Yes	Yes
Welfare Officer	Yes	Yes	No	Yes	No	Yes	Yes
Manager/Coach	Yes	Yes	Yes	No	Yes	Yes	No
Assistant Manager/ Assistant Coach	Yes	Yes	Sudden Cardiac Arrest/ Concussion	No	Best Practice	Yes	No
Coach (England Football Accreditation)	Yes	Yes	Yes	No	Yes	Yes	No
Coach (Non - England Football Accreditation)	Yes	Yes	Best Practice	No	Best Practice	Yes	No
First Aider	Yes	Yes	Yes	No	No	Yes	No
Committee Member	No	No	No	No	No	Yes	Yes
Player Registrations Officer	No	No	No	No	No	Yes	Yes
England Football Accreditation Coordination	No	No	No	No	No	Yes	Yes
Groundsman	No	No	No	No	No	Yes	No
Parent Helper	Yes	Safeguarding For All	Sudden Cardiac Arrest/ Concussion	No	No	Yes	No



POLICIES AND TEMPLATES

Every football club must have a safeguarding children policy; this could be considered the cornerstone of your club. For your policy to be truly effective members need to understand what it means for them and that includes how it's integrated into daily football activities.

A Safeguarding Children Policy should be based on sound straight forward principles and the foundation of a well-run and effective club. By signing up to The FA's safeguarding Children Policy and Procedures and implementing key policies and procedures, best practice will soon become common practice.

It's important to make sure that this information is shared with all new members and that your club has a process to check that this is happening. The FA's current affiliation requirements for youth football mean every club with youth teams must have a CWO; they are key to ensuring everyone is aware of the safeguarding children policy and what this really means for the club.

Having an information event such as a pre-season open evening for new players and their parents/carers would be an excellent way of introducing your club's officials including the CWO and sharing the philosophy and expectations of the club.

POLICY CHECK LIST

Policy	In place	In progress	Last revised
Safeguarding Children/ Adults Policy			
Selection and Recruitment Policy			
A Whistle-blowing Policy			
Health and Safety Policy			
Anti-Bullying Policy			
Equality Policy			
Social Media Policy			
Codes of Conduct for coaches, players, officials and parents/ spectators			

PROCEDURES CHECK LIST

Procedures	In place	In progress	Last revised
Procedures for reporting concerns about the welfare of a child/young person/adult at risk/survivor			
Complaints and disciplinary procedures			
A system for gathering player and parental consent			
A system for gathering medical information about a child or young person			
A system for gathering information about a child or young person's specific needs			
An avenue for young people to express their views and have them heard Information for parents, carers and players			
A committee representative of the wider local community, one that is inclusive representing current members and potential members (e.g. Representing all protected characteristics)			
Travel and overnight stay procedures			
Risk assessment to include safeguarding			

Over the years The FA has been asked for advice and guidance to help clubs create fun, safe and inclusive environments. We have gathered all the Guidance Notes as a complete directory below for easy reference.

[CLICK HERE TO DOWNLOAD FORM](#)

You'll find top tips, templates and a great resource to browse through and see what you and/or your club might benefit from going forwards.

www.thefa.com/football-rules-governance/safeguarding/section-11-the-complete-downloads-directory

Tickets Official Shop Wembley St George's Park More FA Sites Sign in

The FA ENGLAND COMPETITIONS GET INVOLVED LEARNING WOMEN'S & GIRLS' RULES & REGULATIONS ABOUT SHOP Q

SAFEGUARDING For ALL

Rules & Regulations Safeguarding Section 11 - the complete downloads directory

Shares

BEST-PRACTICE AND GUIDANCE NOTES – THE COMPLETE DIRECTORY



Best-practice and guidance notes – the complete directory



SAFEGUARDING VALIDATION VISITS

Derbyshire County FA are required, under The FA and NSPCC Safeguarding 365 Standards, to complete unannounced safeguarding validation visits to a minimum of 13% of its youth clubs by 30 April each calendar year. During the pandemic the visits were temporarily replaced by desktop reviews which will continue in the 2022/23 season, prior to a face to face visit.. All clubs will be expected to have in place the following:

1. The Club's Safeguarding Children Policy
2. That the club policy is easy to find on website/club social media page,
3. That the club has named the specific roles that make up the committee
4. Named the Committee Members and their contact details
5. Outlined the CWO role/responsibilities
6. Identified who is coaching which teams/age groups
7. Club Ethos
8. Detailed how parents/carers can contact their child's coach
9. Outlined how to report a concern about the welfare of a child and included the Derbyshire FA and external contacts
10. Stated it's commitment to The FA Respect Programme, Provided the Respect Codes with links to the County FA and/or Respect pages
11. A complaints policy
12. An anti-bullying policy
13. A Safeguarding Risk Assessment

The County FA will action any follow-up to ensure that safeguards are actively in place. This will initially be in the form of an Action Plan but may lead to sanctions or a further visit in due course as required. However, if County Officials are concerned that adequate safeguards are not in place following a visit, more immediate sanctions, including a club suspension, maybe imposed.

Safeguarding validation visits provide County Officials an opportunity to gather feed-back from players, parents, coaches and clubs with regards to safeguarding within their club which can be used to inform decision-making.

If the CFA becomes aware of an application either at affiliation or for FA England Football Accreditation that may be inaccurate they will check and challenge the club initially however a validation visit could be considered if there are any doubts about the authenticity of the data submitted.

BEST PRACTICE

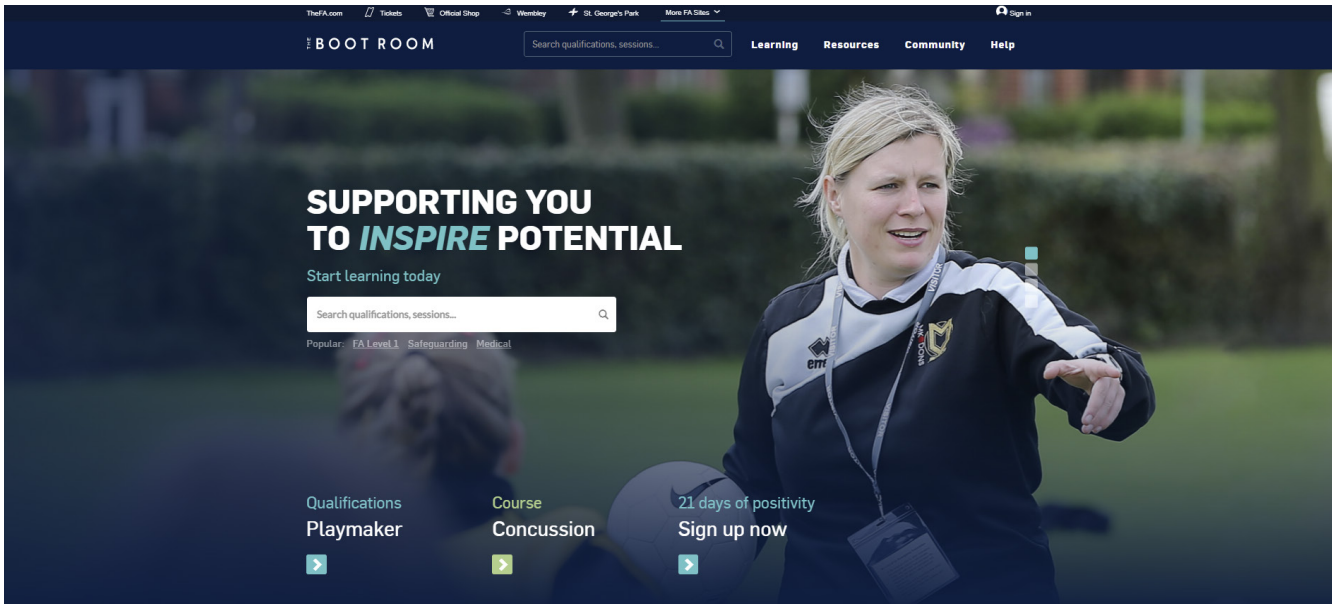


The FA have a wide range of safeguarding best practice guidance which aims to guide clubs on top-ics such as how to go about Changing rooms and showering facilities, ensuring safer recruitment of volunteers and organising trips away.

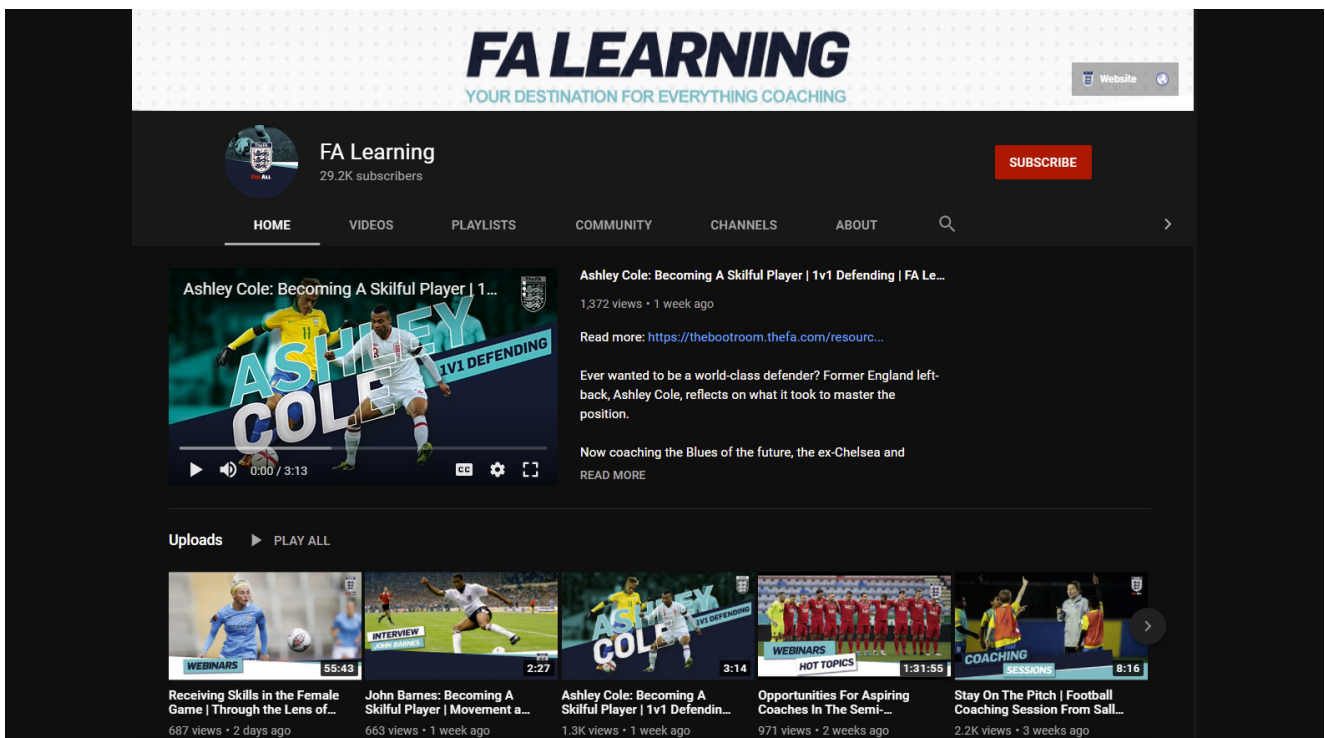
For more information contact the DSO or visit –

www.TheFA.com/football-rules-governance/safeguarding to find out more:

- Appointing a CWO
- CWO roles and responsibilities
- Appointing a YLWO
- YLWO roles and responsibilities
- Safer recruitment
- Club annual membership and consent form
- Choosing a club for your child
- Travel, trips and tournaments
- Changing rooms and showering facilities
- Photography guidelines
- Advice and support; for individuals receiving a disclosure
- Help for survivors
- Grooming signs and steps to take if you are worried about a child Know your rights in football guidance for 16/17 years



The **Boot Room** is The FA's home for coach development, where you can find learning content, courses, events and coaching news to support your development as a coach.



FA Youtube Channel

Introducing the all-new FA Learning YouTube channel, giving you direct access to our latest coaching webinars, sessions, interviews and ideas to stay active.





Net result!

Rigby Taylor has a wide range of superior fertilizers (granules and liquids), grass seed mixtures (for all sports surfaces), award-winning line marking paints, soil improvement products, fungicides and herbicides.



The new IGO Prime is an excellent spray line marker with many advanced features. Pitches marked with either the award winning **Impact** ready to use paint or from the **Duraline** range, provides whiter, brighter, longer-lasting lines. Transfer Wheel Markers and paints also available.



Supporting FA Pitch Improvement Programmes



More detailed information at:
www.rigbytaylor.com
Freephone: 0800 424 919
E-mail: sales@rigbytaylor.com

FACILITIES

INTRODUCTION – OVERVIEW

The FA, Premier League and Sport England (on behalf of Government) created the Football Foundation in 2000 to drive investment to improve grassroots football facilities. Since its launch, it has invested in more than 16,000 projects across England. But despite this success, improving facilities is more vital than ever as much more needs to be done to transform the fortunes of poor-quality grass pitches and to address the huge under-supply of artificial pitches.

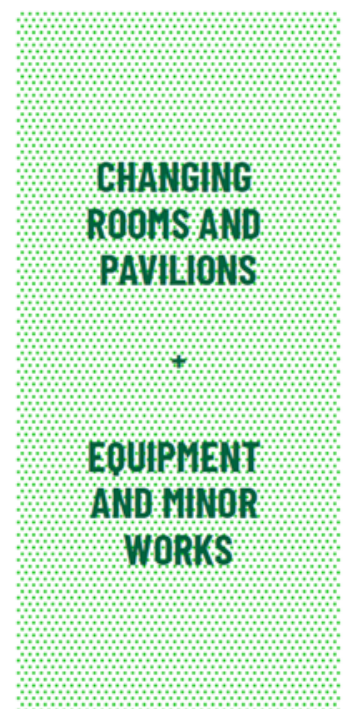
Derbyshire County FA continue to play a vital role in the identification, activation, development and delivery of facility projects at a local level. Derbyshire County FA work in partnership with the following key stakeholders:

- Clubs and Leagues
- Education establishments
- Local Authority Officers
- Local Planning Authority
- Sport England Regional Planners
- Active Partnerships
- Professional Club Community Organisations
- LA Leisure Providers

ON THE PITCH
75-80%



OFF THE PITCH
20-25%





FOOTBALL FOUNDATION



Football Foundation are the Premier League, The FA and Government's charity.

We deliver outstanding grassroots football facilities, which means better games and more players - helping transform communities where demand is greatest, and impact will be strongest.

<https://footballfoundation.org.uk/>



TOGETHER
FOR FOOTBALL



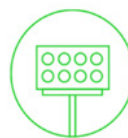
3G Pitch



Changing rooms



Major grass pitch works



Portable floodlights



Goalposts



Fencing



Small sided & recreational



Multiple large works



Storage containers



Clubhouse refurb works



Pitch improvement revenue grant



Maintenance equipment

There are five success factors to every project and these are captured in the National Football Facility Strategy: Measurement Framework. This framework is completely aligned to The FA's priorities in the National Game Strategy. It therefore important that each project seeking investment meets these success factors and that the football outcomes are maximised. While it is not essential that every project delivers every outcome – applicants should be appropriately challenged to create ambitious plans that are diverse and inclusive of all sections for the community and offer a balanced approach to develop all formats for football.



LOCAL FOOTBALL FACILITIES PLANS

To understand demand and accurately target where investment is most needed, a Local Football Facility Plan for each Local Authority area in England has been produced. We expect that 90% of funding will be used to deliver the priority projects identified in these plans. However, inclusion in a Plan does not guarantee funding; it simply identifies the potential that a project has, and the application process provides each project with the chance to make a compelling case for investment and must demonstrate how it will deliver against Football Foundation outcomes.

While Local Football Facility Plans prioritise a broad range of projects, initial efforts should be focused upon those local areas with the greatest need, such as communities whose facilities need significant improvement and projects that grow participation for under-represented and lower socio-economic groups.

The purpose of a LFFP is to identify the priority projects for potential investment in your local area. The FA alongside the Premier League and Sport England (on behalf of the Government) have created all LFFPs.

TAKE A LOOK AT THE BELOW LOCAL FOOTBALL FACILITY PLANS FOR DERBYSHIRE BY CLICKING ON THIS LINK

<https://localplans.footballfoundation.org.uk/>

- Amber Valley
- Bolsover
- Chesterfield
- Derby City
- Derbyshire Dales
- Erewash
- High Peak
- North East Derbyshire
- South Derbyshire



GRASS PITCH IMPROVEMENT PROGRAMME



Derbyshire County FA work in partnership with the FA, Football Foundation and the Grounds Management Association (GMA) to focus on improving the quality of grass pitches across Derbyshire.

PitchPower is a mobile tool that puts the power in your hands, making it easy to sign up and carry out pitch inspections. Once you have completed and submitted the PitchPower assessment you will then receive a detailed assessment report from the Regional Pitch Advisor experts at the Grounds Management Association with recommendations on improving the quality of your grass pitches.

There's lots of guidance to help you through the PitchPower process, as well as this FAQs section <https://footballfoundation.org.uk/pitchpower-faqs?>

Just click the link below to get started to complete the information:
<https://footballfoundation.org.uk/pitchpower>

A banner for the PitchPower program. At the top, there are navigation links: "WHAT WE DO", "WHO WE ARE", "OUR IMPACT", "NEWS", "FIND YOUR LOCAL PLAN", "LOOKING FOR FUNDING?", and "SEARCH". Below these are logos for the Department for Digital, Culture, Media & Sport, the Football Foundation, and the Premier League. The main text reads "PITCHPOWER" in large letters, followed by "A SIMPLE-TO-USE MOBILE TOOL TO HELP YOU INSPECT AND IMPROVE YOUR GRASS PITCHES, AND HELP US ACHIEVE OUR AMBITION TO TRANSFORM GRASS PITCHES RIGHT ACROSS ENGLAND." The background is a dark green with a white geometric shape on the left.

PARTNER - REPLAY

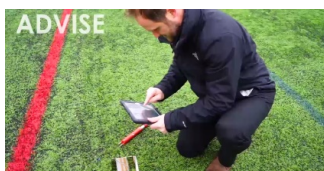
REPLAY.

REVOLUTIONISING MAINTENANCE



PROUD TO SUPPORT AND PARTNER
DERBYSHIRE FA

**SPECIALIST MAINTENANCE FOR ALL
SYNTHETIC SPORTS SURFACES.**



Did you know that Replay Maintenance utilise the unique power of the **PASSPORT365** software to manage, plan, store and interact with all of its facilities? Why not check it out and see how it could revolutionise the management of all your Club Facilities. www.PASSPORT365.com



Please contact us on:
01636 640506
info@replaymaintenance.co.uk
www.replaymaintenance.co.uk

PARTNER - LARCH GROUNDWORK LTD



Larch Groundwork Ltd Sports Turf Specialists

Larch Groundwork offer a full range of pitch preparation and maintenance services including mowing, marking, aeration, scarification, rolling and brushing as well as weed treatment, fertilising and chemical treatment, seeding, top dressing, renovation and repair. Get in touch for a bespoke quotation for your requirements.

We also offer a full range of turf machinery servicing and repair - from pedestrian machines to ride on mowers and other turf equipment. Matt Faulkner our head mechanic has a fully equipped workshop and we can collect/deliver machinery from your site. We may also be able to provide temporary replacement machinery whilst yours in being repaired or replaced.

Call us on 07966672538 or visit www.larchgroundworkltd.co.uk



PARTNER - DURALOCK

DERBYSHIRE FA ARE PARTNERED WITH DURALOCK THE MARKET LEADING, HIGH PERFORMANCE FENCING SYSTEM PROVIDERS THAT DELIVER IN EVERY RESPECT.

Duralock products meet The FA's ground grading requirements and are available in all sizes to conform to national governing body pitch dimensions, with suitable access points.

Through this partnership affiliated clubs in Derbyshire receive a discount of up to 15% off the recommended retail price of Duralock's fencing solutions.

There are three different options available when it comes to pitch side barrier fencing:



MULTI-SPORT HALF-MESH

Designed specifically for sports clubs, the half mesh design prevents the ball from leaving the field of play. This robust fence is strong enough to withstand heavy treatment, which means no worries about how they will stand up to crowds or spectators.

POST AND RAIL

Designed to flex under impact, reducing the risk of injury the post and rail system has the sharp bits cut out too. The concealed fixings and smooth rounded surfaces make the whole system exceptionally safe.



SPECTATOR RAIL

Duralock spectator rail is safe and robust and offers a clear demarcation between spectators and officials. The rail is available in all sizes to conform to national governing body pitch dimensions, with suitable telescopic access points.

All Duralock fencing products are available as permanent, demountable or removable fixtures, which is particularly useful if clubs share their ground with cricket teams during the summer months.

Demountable systems have extended posts that are aesthetically the same as Duralock's permanent systems, but the demountable system enables you to take down your fencing at the end of the season, with caps that can be supplied to cover the sockets when the fencing is removed.

Click here to view the full range of Duralock sport fencing products in our Sports Brochure

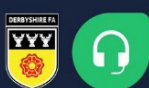
For further information about Duralock Performance Fencing please contact:

Telephone: 01608 678238 Email: sales@duralock.com

ONLINE SUPPORT

24 HOUR SUPPORT.
7 DAYS A WEEK.
365 DAYS A YEAR.

The new Derbyshire FA customer support portal.



BOTH DERBYSHIRE COUNTY FA AND THE FA GRASSROOTS TECHNOLOGY TEAM HAVE SUPPORT PORTALS THAT OFFER 24/7 SUPPORT WITH DIFFERENT FAQ'S.

The County FA portal covers all County FA services from courses to refereeing to facilities and The FA Grassroots Technology portal covers all FA systems including Whole Game System, Player Registrations, Full-Time etc.

To visit them please click on the below links:

[Derbyshire County FA Support Portal](#)

[The FA Grassroots Technology Support Portal](#)



Knowledge Hub

TheFA

WHOLE GAME SYSTEM

TheFA

FULL-TIME ADMIN

TheFA

MATCHDAY

Payments by PayPal

For CLUBS For LEAGUES For VOLUNTEERS

USEFUL LINKS

[DERBYSHIRE COUNTY FA WEBSITE](#)

[THE FA WEBSITE](#)

[FOOTBALL FOUNDATION WEBSITE](#)

[DERBYSHIRE COUNTY FA SUPPORT PORTAL](#)

[THE FA GRASSROOTS TECHNOLOGY SUPPORT PORTAL](#)

[WHOLE GAME SYSTEM](#)

[FULL-TIME](#)





DERBYSHIRE FA

